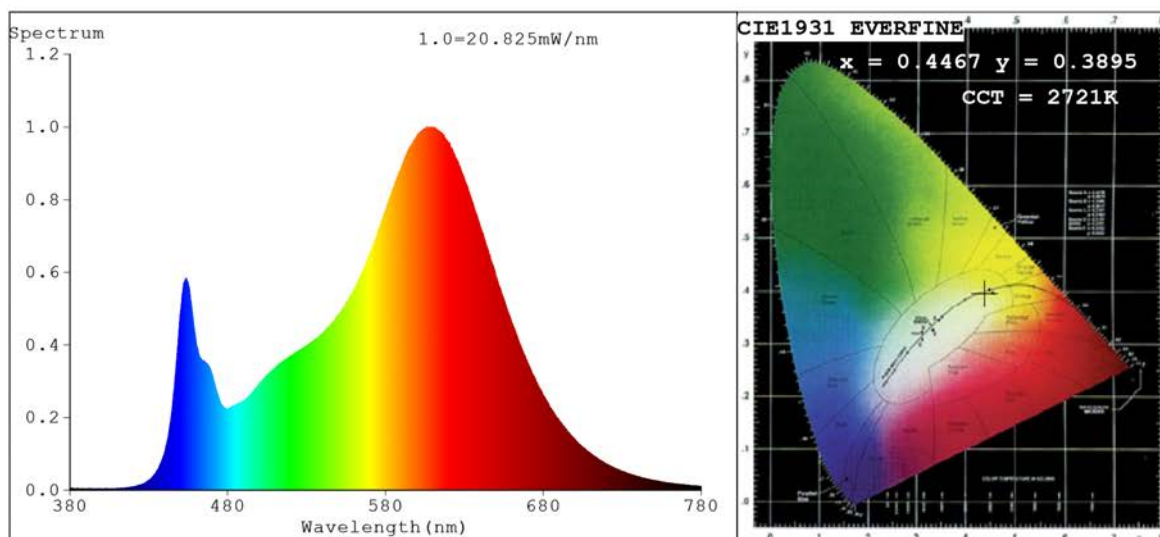


## Spectrum Test Report



### Color Parameters:

Chromaticity Coordinate:  $x=0.4467$   $y=0.3895$  /  $u'=0.2635$   $v'=0.5170$   
 CCT=2721K (Duv=-0.0069) Dominant WL:  $\lambda_d = 586.8\text{nm}$  Purity=51.0%  
 Ratio: R=26.1% G=70.9% B=3.1% ; Peak WL:  $\lambda_p = 606.2\text{nm}$  FWHM=104.1nm  
 Render Index: Ra=84.0 CRI=81.2 TM30: Rf=82 Rg=98  
 R1 =87 R2 =98 R3 =88 R4 =82 R5 =89 R6 =93 R7 =77  
 R8 =58 R9 =17 R10=97 R11=84 R12=82 R13=91 R14=94 R15=79

### Photo Parameters:

Flux = 906.1 lm Eff. : 111.18 lm/W Fe = 2.882 W Scotopic: 1217.9 S/P: 1.344

### Electrical parameters:

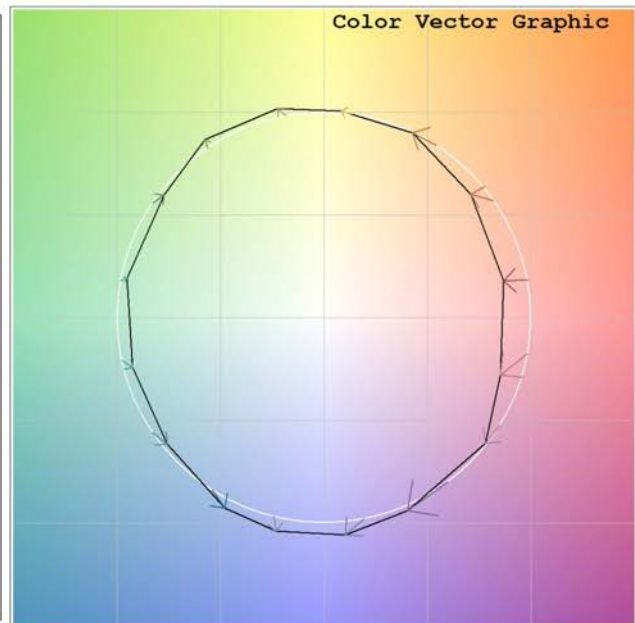
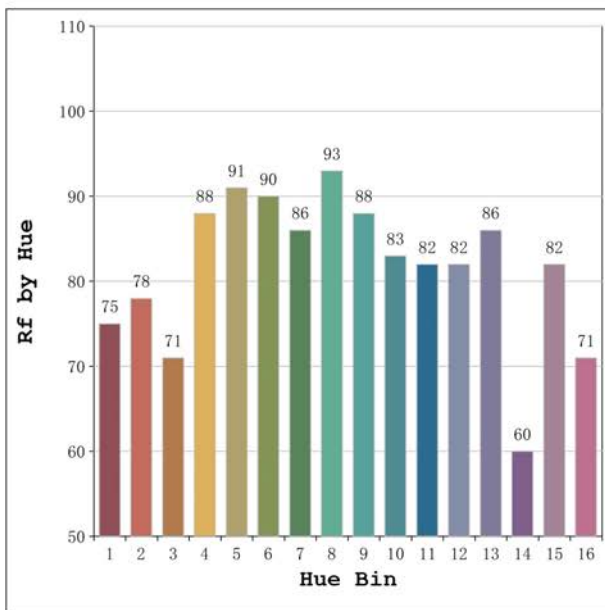
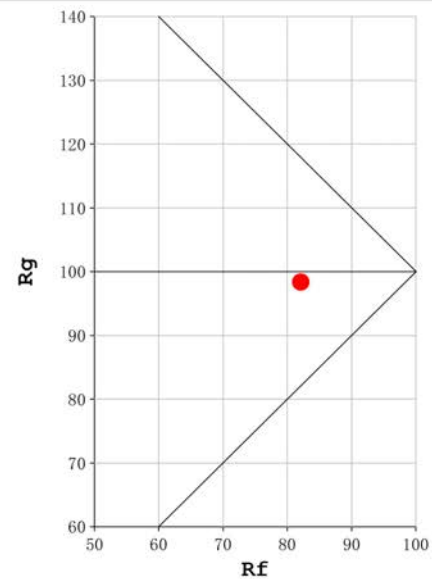
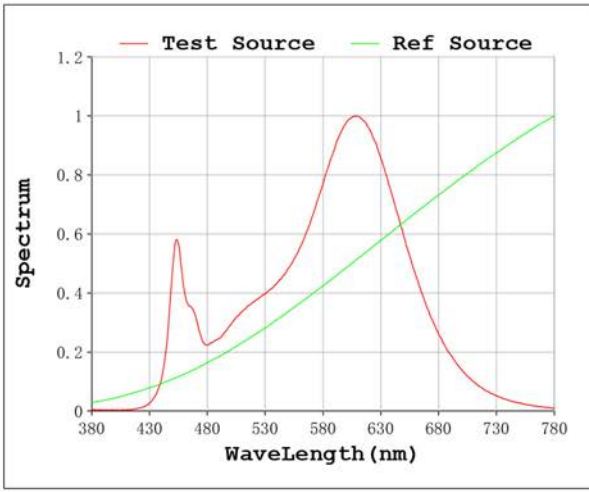
V = 47.998 V I = 0.1698 A P = 8.150 W PF = 1.000

Status: Integral T = 1256 ms Ip = 52047 (79%)

Model: Castellón 2800K  
 Tester: Sergio Carneros  
 Temperature: 27Deg  
 Manufacturer: Luz Negra S.L

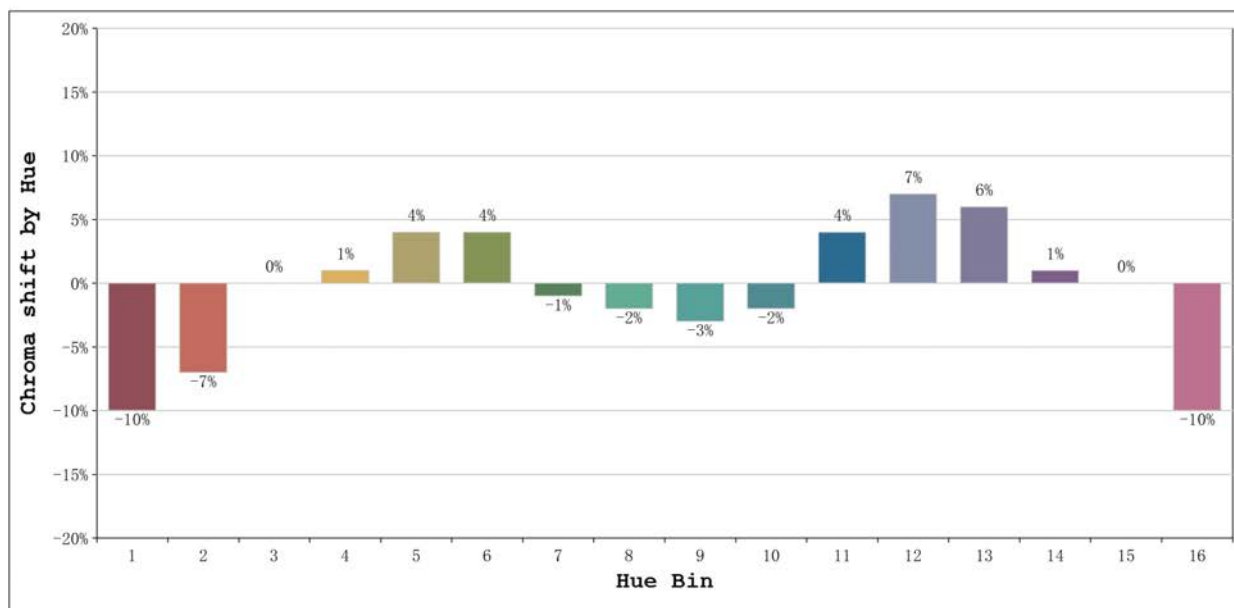
Number: 33.214  
 Date: 2024-05-27 15:24:03  
 Humidity: 40%  
 Remarks: 100cm de tira flexible

**Rf: 82**      **CCT: 2721 K**      **u': 0.2635**  
**Rg: 98**      **Duv: -0.0069**      **v': 0.5170**



Model:Castellón 2800K  
 Tester:Sergio Carneros  
 Temperature:27Deg  
 Manufacturer:Luz Negra S.L

Number: 33.214  
 Date:2024-05-27 15:24:03  
 Humidity:40%  
 Remarks:100cm de tira flexible



Hue Bin	Hue Angle	Rf	Graphic shift(%)	
			Chroma	Hue
1	0.0° - 22.5°	75	-10	2
2	22.5° - 45.0°	78	-7	9
3	45.0° - 67.5°	71	0	13
4	67.5° - 90.0°	88	1	5
5	90.0° - 112.5°	91	4	3
6	112.5° - 135.0°	90	4	0
7	135.0° - 157.5°	86	-1	-5
8	157.5° - 180.0°	93	-2	-1
9	180.0° - 202.5°	88	-3	4
10	202.5° - 225.0°	83	-2	8
11	225.0° - 247.5°	82	4	10
12	247.5° - 270.0°	82	7	3
13	270.0° - 292.5°	86	6	-9
14	292.5° - 315.0°	60	1	-23
15	315.0° - 337.5°	82	0	-10
16	337.5° - 360.0°	71	-10	-12

Model:Castellón 2800K  
Tester:Sergio Carneros  
Temperature:27Deg  
Manufacturer:Luz Negra S.L

Number: 33.214  
Date:2024-05-27 15:24:03  
Humidity:40%  
Remarks:100cm de tira flexible